

Skeletal Radiology Instructions for Authors

Contents

| | |
|---|---|
| General Information | 1 |
| Ethical Responsibilities of Authors..... | 3 |
| Ethical Principles Regarding Content of the Work..... | 3 |
| Suspicion of Misconduct..... | 3 |
| Conflict of Interest | 4 |
| Ethical Treatment of Human Subjects..... | 5 |
| Informed Consent | 5 |
| Research Involving Animals | 6 |
| Request for Re-Use of Published material | 7 |
| General Format Guidelines for All Manuscripts..... | 7 |
| Manuscript Types | 8 |
| Authorship..... | 8 |
| Manuscript Organization..... | 9 |

General Information

- All manuscripts should be submitted online at <http://www.editorialmanager.com/skra/>, following the on-screen instructions.
- The Journal does not offer pre-evaluation. Publication decisions are made only after review of the manuscript
- Submission requirements for Skeletal Radiology are in accord with the “Uniform Requirements for Manuscripts Submitted to Biomedical Journals” of the International Committee of Medical Journal Editors (ICMJE). These requirements are available online (<http://www.icmje.org>).
- Submission of a manuscript implies: that the work described has not been published before; that it is not under consideration for publication anywhere else; that its publication has been approved by all co-authors, if any, as well as by the responsible authorities – tacitly or explicitly – at the institution where the work has been carried out. The publisher will not be held legally responsible should there be any claims for compensation.
- Authors wishing to include figures, tables, or text passages that have already been published elsewhere are required to obtain permission from the copyright owner(s) for both the print and online format and to include evidence that such permission has been granted when submitting their papers. Any material received without such evidence will be assumed to originate from the authors.

- Acceptance of manuscripts for publication is based solely on the Editor's decision including the results of peer review.
- All accepted articles will be edited as required to meet the standard of the Journal.
- It is the Corresponding Author's responsibility to ensure that he/she has the correct authors' names, affiliations, addresses and author sequence when the manuscript is submitted. Changes in authors (including adding authors) or in the order of authors will only be accepted **after submission** of a manuscript, if all authors sign an agreement form.
- No corrections are possible after online first publication. In the event of a serious error or omission, if approved by the Editors-in-Chief, a correction will be published and hyperlinked to the original article.
- All submissions must be completely blinded for the review process and any identifying information must be removed. This includes any mention of the institutional name or geographic location as well as names or initials of those associated with the study or included in an acknowledgement. The manuscript can be anonymized in Word utilizing the Text Highlight Color tab in the Font menu, by highlighting the text to be anonymized in black, obscuring it.
- **This journal also publishes special/guest-edited issues.** The peer review process for these articles is the same as the peer review process of the journal in general. Additionally, if the guest editor(s) authors an article in their special issue, they will not handle the peer review process.

Ethical Responsibilities of Authors

This Journal is committed to upholding the integrity of the scientific record. As a member of the Committee on Publication Ethics (COPE) the Journal will follow the COPE guidelines (<https://publicationethics.org/>) on how to deal with potential acts of misconduct.

- Authors should include statements concerning conflict of interest, and if applicable, statements on the ethical treatment of human and animal subjects. Statements should be placed in a separate section at the end of the manuscript before the references, entitled “Compliance with Ethical Standards.” Examples are provided in the Conflict of Interest, Ethical Treatment of Human Subjects and Research Involving Animals sections below.
- If requested, the corresponding author should be prepared to present evidence of IRB approval.
- The Editors reserve the right to reject manuscripts that do not comply with the above-mentioned guidelines.

Ethical Principles Regarding Content of the Work

The rules of good scientific practice include:

- The manuscript may be submitted to only one journal at a time.
- The manuscript has not been published previously (partly or in full). If the manuscript expands upon previous work and/or reused material (or cases), this must be clearly identified and referenced. Failure to do so constitutes “self-plagiarism”.
- Also if data from the manuscript have been published as a scientific abstract this needs to be clearly identified and referenced.
- No data have been fabricated or manipulated (including images).
- No data, text, or theories by others are presented as if they were the author’s own (“plagiarism”). Proper acknowledgements to other works must be given (this includes material that is closely copied (near verbatim), summarized and/or paraphrased), quotation marks are used for verbatim copying of material, and permissions are secured for material that is copyrighted.
- The Journal routinely uses software to screen for plagiarism.
- Upon request authors should be prepared to send documentation or raw data in order to verify the validity of their results.

Suspicion of Misconduct

If there is a suspicion of misconduct, the Journal will carry out an investigation following the COPE guidelines. If, after investigation, the allegation seems to raise valid concerns, the author will be contacted and given an opportunity to address the issue. If misconduct

has been established beyond reasonable doubt, the Editor-in-Chief may implement actions including, but not necessarily limited to, the following:

- If the article is still under consideration, it may be rejected and returned to the author.
- If the article has already been published online, depending on the nature and severity of the infraction, either a correction will be placed with the article or in severe cases complete retraction of the article will occur. The reason will be published in the erratum or retraction note.
- The Department Chair, the Institutional Review Board or Ethics Committee, and/or the hospital administrator/Dean may be notified.

Conflict of Interest

Authors should include information regarding sources of funding, potential conflicts of interest (financial or non-financial), informed consent if the research involved human participants, and a statement on welfare of animals if the research involved animals.

Authors must disclose all relationships or interests that could have direct or potential influence or impart bias on the work, even if an author does not think there is any influence on the work being reported.

A conflict of interest is not necessarily inappropriate. Examples of potential conflicts of interest may include but are not limited to the following:

- Research grants from funding agencies (please give the research funder and the grant number)
- Honoraria for speaking at symposia
- Financial support for attending symposia
- Financial support for educational programs
- Employment or consultation
- Support from a project sponsor
- Position on advisory board or board of directors or other type of management relationships
- Multiple affiliations
- Financial relationships, for example equity ownership or investment interest
- Intellectual property rights (e.g. patents, copyrights and royalties from such rights)
- Holdings of spouse and/or children that may have financial interest in the work

Non-financial interests that may be important to readers should also be disclosed. These may include but are not limited to personal relationships or competing interests directly

or indirectly tied to this research, or professional interests or personal beliefs that may influence your research.

The corresponding author collects the conflict of interest disclosure forms from all authors. In author collaborations where formal agreements for representation allow it, it is sufficient for the corresponding author to sign the disclosure form on behalf of all authors.

Some examples of disclosures:

Funding: This study was funded by X (grant number X).

Conflict of Interest:

Author A has no conflict of interest.

Author B has received research grants from Company A;

Author C has received a speaker honorarium from Company X and owns stock in Company Y

If no conflict exists for all, the authors should state:

Conflict of Interest: The authors declare that they have no conflict of interest.

Ethical Treatment of Human Subjects

When reporting studies that involve human participants, authors should include a statement that the studies have been approved by the appropriate institutional and/or national research ethics committee and have been performed in accordance with the ethical standards as laid down in the 1964 Declaration of Helsinki and its later amendments or comparable ethical standards. This requirement extends to retrospective analyses of patient data as well as prospective studies.

If doubt exists whether the research was conducted in accordance with the 1964 Helsinki Declaration or comparable standards, the authors must explain the reasons for their approach, and demonstrate that the independent ethics committee or institutional review board explicitly approved the doubtful aspects of the study.

The following statements should be included in the text before the References section when reporting studies that involve human participants:

Ethical approval: “All procedures performed in studies involving human participants were in accordance with the ethical standards of the institutional and/or national research committee and with the 1964 Helsinki declaration and its later amendments or comparable ethical standards.

Informed Consent

- The following statement should be included for manuscripts in which the Institutional Review Board or Ethics Committee required informed consent:
“Informed consent was obtained from all individual participants included in the study.”
- If identifying information about participants is included in an article, the following statement should also be included:
“Additional informed consent was obtained from all individual participants for whom identifying information is included in this article.”
- If your manuscript contains any individual person’s data in any form, including indirect identifiers, images, or videos relating to an individual person, consent to publish must be obtained from that person, or in the case of children under 18, their parent or legal guardian. If the person has died, consent for publication must be obtained from their next of kin. **All presentations of case reports, case descriptions and case series must have consent to publish**
“Informed consent was obtained from the subject described in this report.”
“Informed consent was obtained from the next of kin of the subject described in this report.”
- The following examples or a similar statement should be included in manuscripts for which the Institutional Review Board or Ethics Committee does not require informed consent:
“Approval from the Institutional Review Board was obtained, and HIPAA requirements were followed. Informed consent was not required.”
“Approval from the Institutional Review Board was obtained and in keeping with the policies for a retrospective review, informed consent was not required.”

Research Involving Animals

The welfare of animals used for research must be respected. When reporting experiments on animals, authors should indicate whether the international, national, and/or institutional guidelines for the care and use of animals have been followed, and that the studies have been approved by a research ethics committee at the institution or practice at which the studies were conducted (where such a committee exists).

For studies with animals, the following statement should be included in the text before the References section:

Ethical approval: “All applicable international, national, and/or institutional guidelines for the care and use of animals were followed.”

If applicable (where such a committee exists): “All procedures performed in studies involving animals were in accordance with the ethical standards of the institution or practice at which the studies were conducted.”

Request for Re-Use of Published material

Requests for re-use of published material should be made on-line using the following link which will provide detailed step-by-step instructions:

<http://www.springer.com/de/rights-permissions/obtaining-permissions/882>.

General Format Guidelines for All Manuscripts

- All manuscripts must be submitted in English with double-spaced, 12-point, left justified, Times New Roman type. Authors not experienced with writing scientific manuscripts in English are strongly encouraged to have their manuscript reviewed by a native English speaker or an individual experienced with scientific writing in English. Badly written manuscripts are more likely to be rejected; language itself may be a reason for rejection.
- Manuscripts must be formatted in accordance with the requirements and limitations for the specific type of article submitted (as outlined below).
- The Journal reserves the right to return manuscripts “unreviewed” if the appropriate format has not been followed.
- All identifying information (such as organizational affiliations) should be removed from the manuscript text and acknowledgements as noted above in General Information. Additionally, all submitted images should be anonymized with all patient data removed. Manuscripts with identifying information will be returned “unreviewed.”
- All authors must include a conflict of interest statement as well as a statement identifying their contributions to the manuscript. This statement should be uploaded as an addition to the non-blinded title page.
- Blinded manuscript pages should be numbered sequentially, with the blinded title page as page number 1 (see Manuscript Organization below).
- Manuscripts should be prepared in Word format (Microsoft Word 2007 or later) and submitted in docx format.
- Tables should be prepared using table function in Word.
- Equations should be prepared using equation editor or Math Type.
- **The use of abbreviations is discouraged.** Terms used more than 6 times may be abbreviated, with the abbreviation defined, following the first mention of the term.

- References should be placed at the end of the manuscript, in the order in which they are cited in the text. Reference citations in the text should be identified by numbers in square brackets (e.g.: [3] or [1-3, 7]). Only numerals should be cited in the text. If there are six authors or fewer, all should be listed. If seven or more, list the first three and then “et al” the rest. The Vancouver reference style is used in this Journal. Please note that EndNote offers a bibliographic style specifically for *Skeletal Radiology*.

Manuscript Types

- Skeletal Radiology accepts 8 types of manuscripts: (1) scientific article, (2) review article, (3) white paper, (4) case report, (5) perspective, (6) test yourself: question and answer, (7) technical report, and (8) letter to the Editor. Requirements for each of these submissions are described in detail below.
- The Journal has interpreted a case report as a manuscript that describes and analyzes individual cases. The case report designation should be used for manuscripts that detail four or less cases. When reports include more than four cases, results and observations should be summarized and the manuscript submitted as a scientific article.
- For questions concerning scientific articles, review articles, white papers, perspectives and technical reports contact Thomas M. Link, MD, (e-mail: thomas.link@ucsf.edu) or Bill Palmer, MD, (e-mail: wpalmer@mg.harvard.edu).
- For questions concerning case reports, test yourself or how we do it manuscripts, contact Ali Guermazi, MD, (e-mail: guermazi@bu.edu).

Authorship

- All authors must have made substantial contributions to *all four* categories established by the International Committee of Medical Journal Editors (<http://www.icmje.org>) to include: (1) conception and design, or acquisition of data, or analysis and interpretation of data, (2) drafting the article or revising it critically for important intellectual content, (3) final approval of the version to be published, and (4) agree to be accountable for all aspects of the work if questions arise related to its accuracy or integrity. The corresponding author will be required to verify each authors contribution at submission.
- Individuals who have not made substantial contributions in all four categories, but who have made substantial contributions either in some of them, or in other areas, should be listed in acknowledgments.
- There are no author limits for scientific articles, review articles and technical innovations.
- A maximum of 5 authors is allowed for a letter to the editor, although no more than 3 is preferred.
- A maximum of 10 authors is allowed for case reports, Test Yourself manuscripts and perspective submissions.
- As note previously, it is the Corresponding Author’s responsibility to ensure that

he/she has the correct authors' names, affiliations, addresses and author order when the manuscript is submitted. **Changes in authors or in the order of authors will not be accepted after the initial submission of a manuscript.**

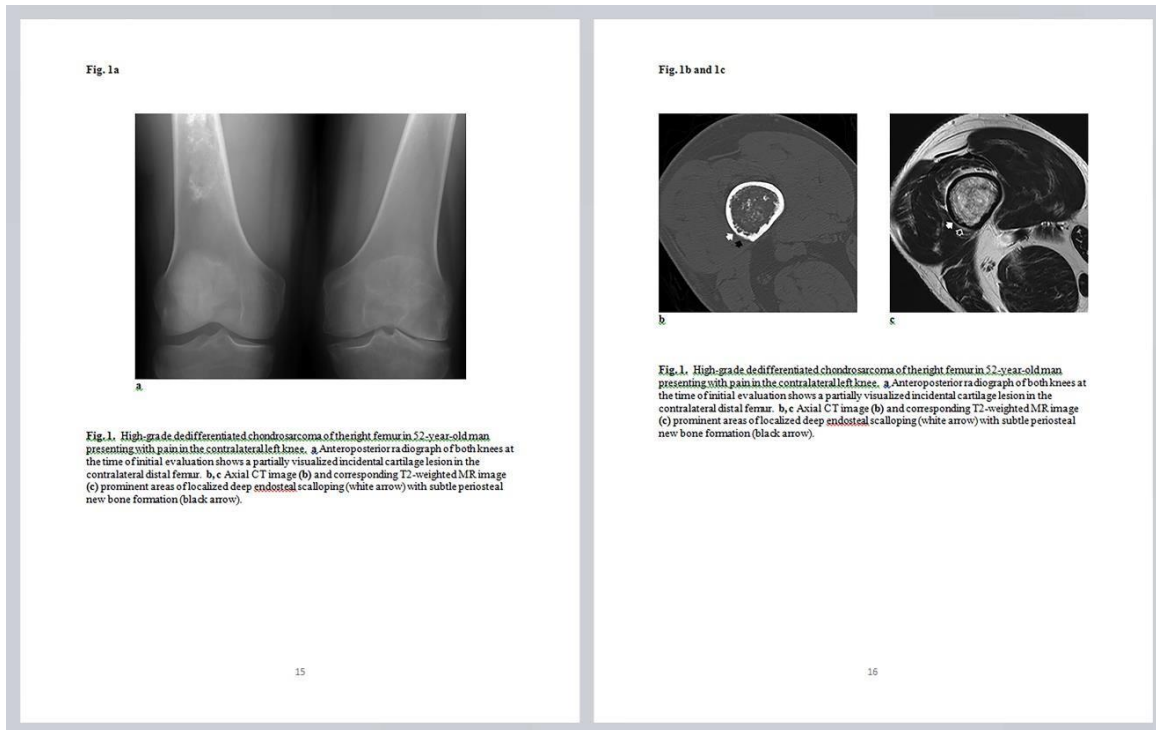
- Changes in authorship are not permitted during manuscript revision. Additional contributions to the manuscript by non-authors during revision can be recognized by an acknowledgment. Requests for an exception to this policy will be considered on a case by case basis and only when the scope of the manuscript has significantly expanded as a result of the requested revisions. Such requests must be accompanied by a detailed justification of the circumstances and approved prior to resubmission. In addition, the corresponding author must include a letter signed by all authors, the original submitting authors and those added acknowledging that they agree with the proposed change(s) and the revised author order. The decision of the assigned Editor in all such cases is final and not subject to review.

Manuscript Organization

- **Scientific Article:** The Journal defines a scientific article as a manuscript that provides new information based on original research and is typically hypothesis or objective driven. A "Meta-Analysis" is a scientific article which combines and analyzes the data from multiple published studies to improve the statistical power of results. The format is like that of a Scientific Article. All manuscripts should be organized as detailed below:
 - **Title Page** should include: all author names (in correct order), author affiliations and the e-mail address of corresponding author. Each author's affiliation must reflect that at the time of the study. Author information cannot be changed following the initial submission of the manuscript. Additional page(s) should include the authors' disclosure and contribution statements as well as any required supplemental material.
 - **Blinded Manuscript** organized as follows: blinded title page, abstract, introduction, materials and methods (or alternatively subjects and methods), results, discussion, acknowledgments, references, figure legends, tables and figures. While there are word limits for the Abstract and Introduction sections, there are no specific limitations on the number of words, tables or figure parts; however, the number of words, images and tables should be limited to those required to adequately convey your manuscript's "take-home" message.

- **Blinded title page** has only the title of the manuscript with no author or institutional affiliation
- **Abstract** is limited to 250 words and should be structured into four sections corresponding to the body of the manuscript: Objective; Materials and Methods, Results and Conclusion. Each section should comprise one paragraph, beginning with the name of the section in italics, followed by a period (*Objective*. To report...). The objective of the manuscript as listed in the abstract must agree with the purpose as identified in the Introduction (see below). Abbreviations should not be used in the Abstract with the exception of those such as CT and MRI, which are commonly accepted. Citations should not be included in the Abstract
- **Introduction** should briefly state the nature and purpose of the work, quoting the relevant literature, and indicating its importance and relevance. The final paragraph of the Introduction must specifically indicate the exact purpose of the manuscript and should match the purpose that is stated in the Abstract. This section should not exceed 400 words.
- **Materials and Methods** section should include all details of clinical and technical procedures stated in the STARD initiative for studies of diagnostic accuracy (<http://radiology.rsna.org/cgi/content/full/226/1/24>). Authors should concentrate on providing inclusion and exclusion criteria, method and setting of data collection. Include the beginning and end dates of recruitment. Was the study population a consecutive series? If not, how was the study population selected? Describe experience and blinding of interpreters. Describe statistical methods for calculating or comparing measures of diagnostic accuracy and methods to quantify uncertainty (confidence interval).
- **Results** should be presented clearly, concisely and without comment. Every item mentioned in Materials and Methods should have a corresponding item (result) in the Results section. Similarly, the basis for the evaluation of items included in the Results section should be fully explained in the Materials and Methods section.
- **Discussion** should explain your results and relate them to those of other authors and define their significance for clinical practice. Difference with previous studies should be identified and analyzed. A limitations section should be added before the conclusion paragraph. Although the manuscript should end with a brief concluding paragraph, do not create a “Conclusion” subtitle. Conclusions that can be drawn from the investigation should be expressed in the final sentences of the manuscript. Future directions should not be added to the conclusion.
- **Acknowledgments** are for individuals who have not made sufficiently substantial contributions to the manuscript to be considered authors, but who have assisted in the conception, design, editing, etc. Comments on grants or funding for the study can also be included. Any identifying information such as individual or institutions names must be anonymized (see General Information).
- **References** should be formatted as noted in the General Format Guidelines above. References are listed in the order referenced in the text.

- **Tables** should be presented in a column and row format and not duplicate the data presented in the results. Tables should be titled and numbered consecutively.
- **Figure Legends** should use the *Skeletal Radiology* style (**Fig. 1** Scatter diagram showing...; **Fig. 2** 24-year-old man with... **a** Coronal...), providing age, gender and diagnosis or finding illustrated. Any electronic alteration of images that substantially changes the information provided by the image should be completely described. Figure legends should be included at the end of the manuscript document and not uploaded as a separate document or as supplemental material. Individually uploaded figures are required for publication and should be submitted at the time of initial submission.
- **Supplementary Material** includes permission documentation for images or text passages that have already been published elsewhere or other materials from copyright owner(s).
- **Figures** for manuscripts should be uploaded as individual figure parts. In addition, figures should be imbedded within the Microsoft Word document after the figure legends. Each image should be identified by its figure number with the legend appearing immediately below the image (see the image below). Images should appear in the order in which they are cited in the text. In general, when multiple patients are presented, all images relating to the same patient should have the same figure number. Multiple images for the same patient should be identified by sequential letters (e.g.: Fig. 1a, Fig. 1b, etc). Imbedded images should be of sufficient quality and size so that the illustrated features are readily apparent. In general images should be 300 dpi and no smaller than 3 inches (7.6 cm) square or larger than 6 inches (15.2 cm) square. Each figure part should be submitted as an individual image. There is no formal maximum number of images allowed, but figures should be limited to those required to adequately convey the scientific message presented.



- **Review Article:** A review article is a scholarly discussion of the literature, bringing together ideas and observations into a coherent discussion of a topic. It is especially appropriate when a field of study has undergone changes that have not yet made their way into standard textbooks. It is not a case report, and it is not a scientific article in the sense of having materials methods and results. Because of the nature of a review article, the structured format of a scientific manuscript is not required. The text can be a continuous narrative as required by the author(s). The Abstract is limited to 250 words but is otherwise non-structured.
- **White Paper:** A white paper is an authoritative report prepared by subject matter experts on complex issues to provide a concise guide for users, reflecting the reporting organization’s philosophy and recommendations on specific subject matter.
 - There are no specific format requirements.
 - Due to the multi-institutional organizational basis of such manuscripts, the Journal should be contacted prior to the initiation of such project.
- **Case Report:** The format for a case report should follow that for a scientific manuscript with the following limitations:
 - The blinded manuscript should be organized as follows: blinded title page, Abstract, Introduction, Case Report, Discussion, Acknowledgments, References, Tables, Figure Legends, and Figures.
 - The title of the case report must include diagnosis with the diagnosis at the beginning of the title. For example, the title “A mature adult with a rare case of

Langerhans cell histiocytosis,” would be more concise if restructured as “Langerhans cell histiocytosis: a rare case in an adult.”

- The Abstract is limited to 250 words, but is otherwise not structured. It should indicate the diagnosis, a brief summary of the reported case specifics, and a brief explanation of why it merits publication.
 - The Introduction should indicate why the case is being presented and its clinical relevance. It should stress what this case adds to the literature and how and why it should be of interest to readers of the Journal. As a generalization, cases that serve only to report unusual disease manifestations without defined teaching value or clinical relevance are not appropriate.
 - The Discussion should focus on those aspects of the case that are necessary to convey the message that the author(s) wish to make. Extraneous information is discouraged.
 - The Figures should be placed after the Figure Legends. Each figure part should be formatted as specified for a Review Article. When multiple cases are included, images for each case should be presented together in a single figure. In general, images should be presented in chronological order.
- **Perspective:** This manuscript is a commentary of 1500-2000 words, addressing a broad range of topics in musculoskeletal science, education and practice. Members of the Editorial Board may solicit or contribute these commentaries. Authors and readers are also invited to contribute commentaries. As a generalization, illustrations are not permitted and references are limited.
 - **Test Yourself: Question and Answer:** The purpose of the “Test Yourself” manuscript is to allow the reader to test his or her diagnostic skill in diagnosing unusual entities. Accordingly, such cases must have radiologic features and/or pathological features that will allow an accurate diagnosis, or at least a narrow differential, to a knowledgeable reader. Cases with unreported features are not appropriate for this type of submission.
 - The format for this manuscript is very brief and consists of two parts, a “question” and an “answer.”
 - The “Question” section should have a title which indicates the presentation, and does not reveal the diagnosis: for example “Painful Suprapatellar Swelling.” It should be followed with a very brief history containing only essential data and generally not more than one or two lines of text. Up to six figure parts may be submitted, preferably with at least one showing pathology. The figure legends should only indicate the modality (e.g. T2 weighted MRI; Giemsa stain 400X), and should not reveal the diagnosis.
 - The “Answer” section should be placed immediately after the “Question” section begin with a one line statement of the diagnosis, followed by a Discussion of up to 500 words, with no more than 10 references. The title of the Answer should match that of the Question. Since this submission is a test for the knowledgeable reader, the answer section should address the salient diagnostic features of the images included in the question, although no additional images should be included in the answer portion. Exception to this policy may be made by the reviewing Editor and are not subject to review.

- **Technical Report:** This section is designated for papers that describe a new or novel diagnostic or therapeutic technique that may be experimental (tested on non-human subjects) or with limited clinical application. Newer technology, novel applications of existing technology, biopsy and therapeutic procedures are some examples of applications that would be considered suitable for this section. The format should be as outlined for scientific manuscripts.
- **Letter to the Editor:** Letters to the Editor may offer pertinent comment or constructive criticism of articles published in Skeletal Radiology. The timeliness of such letters is important and they must be received no later than three months following the on-line publication of a manuscript. They should directly relate to material within the article. Letters that do not directly deal with the published material and only shares the authors' experience with a similar subject matter are not appropriate. Such letters are published at the discretion of the Editor and are subject to editing for content and style. Once accepted, they will be sent the author(s) for response. Letters not addressing published material will be evaluated by the editor on their perceived value to the readers of Skeletal Radiology. No letter will exceed 500 words or have more than 6 references. Images, tables, graphs, etc., will not be accepted except under unusual circumstances.



<http://www.springer.com/journal/256>